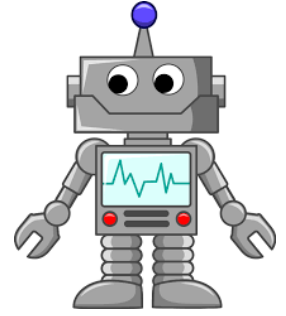




# STEAM Showcase



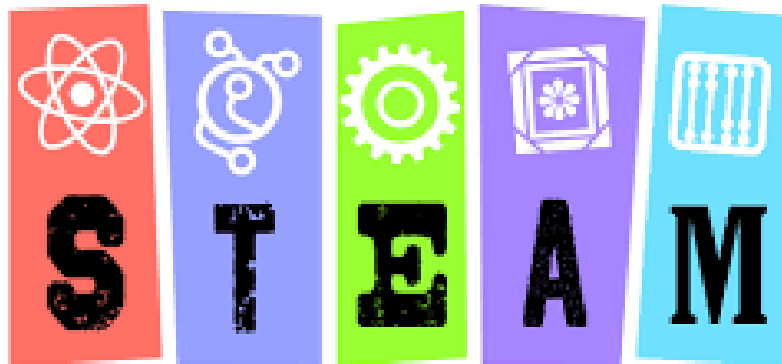
## Art Poster Contest

Sponsored by Leon County Schools and  
The Challenger Learning Center

*Attention all 3<sup>rd</sup> and 4<sup>th</sup> graders in Leon County*

In the fall of 2017, Leon County Schools and The Challenger Learning Center will sponsor its inaugural STEAM Showcase, featuring science fair investigations, engineering projects, and inventions. The event will be held the same day as the Science Festival, which will include numerous hands-on science and engineering opportunities from local organizations in the Big Bend area. We encourage children of all ages and their parents to participate. To help build excitement for the event, we are sponsoring an art poster contest. The winning entry will receive a poster AND t-shirt printed with the artwork.

We are  
looking for  
YOU to Design  
our STEAM  
Poster!



Help us  
put the  
word out!

SCIENCE • TECHNOLOGY  
ENGINEERING • ART • MATHEMATICS

- Entries must include all 5 elements of STEAM and express Tallahassee in an artistic way.
  - Entries must include the date of the event--October 28, 2017.
- Entries may include location of event: Challenger Learning Center of Tallahassee & Kleman Plaza.
  - Entries may include color (up to 2 colors in addition to black and white).
- Only currently registered 3<sup>rd</sup> and 4<sup>th</sup> graders in a Leon County public, charter, private or home school may enter.
  - One entry will be chosen to represent the fall event.
  - Entries must be submitted on a clean 8 ½" x 11" sheet of white paper.
    - Additional forms may be found at [www.ChallengerTLH.com](http://www.ChallengerTLH.com).



ask a **QUESTION**

## Artwork Requirements

- Artwork must be submitted on clean white paper.
- Student artwork must be original work created by the student enrolled in Leon County/Tallahassee. Photographs and images found online will not be judged.
- Entries with words in the design should have all words correctly spelled.
- Student names must *only* be written on the back of the artwork. No names (including school names) should be on the front of the artwork. If selected, the artist's name will be printed next to his/her artwork.
- Entries should not be framed or mounted. Matted, mounted, framed, laminated, or folded artwork will not be judged.
- All entries must be received by March 31, 2017. Late entries will not be judged and will be disqualified.

Artwork should be delivered or mailed to:

Andrea Goddard  
Howell Building, Leon County Schools  
3955 W. Pensacola St.  
Tallahassee, FL 32304

Write "Do Not Bend" and add cardboard to the envelope before putting in mail.

- No more than one artwork will be submitted per child.
- All submitted artwork is owned by the sponsor. Artwork will be used to promote the STEAM Showcase for Leon County Schools and Challenger Learning Center of Tallahassee. Entries will not be returned.

## Eligibility

- Applicants must be enrolled in a public, charter, private, or registered home school within Leon County in grades 3-4 during the August 2016-May 2017 school year.

## Judging

- A prestigious panel of judges will choose the winning artwork.
- Entries will be judged based on:
  - Inclusion of S.T.E.A.M. as it relates to Science, Technology, Engineering, Art, Math
  - Inclusion of Tallahassee area/location
  - Inclusion of date as October 28, 2017
  - Creativity and uniqueness
  - Overall visual appeal and composition
  - Neatness and craftsmanship
  - Age appropriateness
  - All judgements are final.

## Work Chosen

Only one winning original artwork will be featured for advertising at the event. Additional artwork may be displayed at the event.

Student Name _____	
School _____	
School Phone # _____	
Teacher name and grade _____	
Parent phone # _____	
I grant permission to Leon County Schools and The Challenger Center of Tallahassee to reproduce my child's artwork.	
_____ Parent Signature	_____ Date

This form must be completed and attached to the back of entry.